



**CONVENTIONAL AIR CAP AND FLUID NOZZLE CHART**

MODEL NO.	AIR CAPS	Press / Siphon	*SUGGESTED GUN INLET PRESS.	FAN CONTROL	SCFM	AIR CAP RING	AVAILABLE FLUID NOZZLES	NEEDLES / marking on needle
T100C	21-2163	pressure	50	60-1505	8	Included	31-0606 0.6mm (.022") 31-0607 0.7mm (.028") 31-0610 1.0mm (.040") 31-0612 1.2mm (.046") 31-0613 1.3mm (.052") 31-0615 1.5mm (.059") 31-0618 1.8mm (.070") 31-0622 2.2mm (.086") 31-0628 2.8mm (.110")	40-1107 (107)
	21-2263	pressure	50		14			
	21-2263-E	pressure	50		15			
	21-2363	pressure	50		13.6			
	21-2166	siphon	50		5			
	21-2266	siphon	50		12			
	21-2266-3	pressure	50		16.2			
	21-2366	siphon	50		12			
	21-2466	siphon	50		15			
	21-2167	pressure	50		14.5			
	21-2267	pressure	50		15			
	21-2168	pressure	50		14			
	21-200**	pressure	50		5.2			
	21-201**	pressure	50		5.2			

Actual fluid nozzle and air cap combinations are determined by application (see application chart page 4)

\*Gun inlet pressures may vary as required by application

\*\*200 Air cap requires P/N 21-1583 base & 21-1584 ring

# Operation and Maintenance Instructions for **TOMCAT** Spray Guns

## Operation

1. Connect air supply hose at handle of gun.
2. Connect a pressurized fluid supply or paint siphon cup to the gun fluid inlet.
3. Fluid flow can be controlled using the fluid control knob, this restricts flow by limiting needle travel. It is best to control fluid flow by proper selection of fluid orifice size and use the fluid control knob to “fine tune flow rate”.
4. Fan width can be adjusted using the fan control knob. Turning the knob clockwise narrows the fan.

## Maintenance

IMPORTANT! Routine cleaning and maintenance is essential to insure proper gun operation. Several states prohibit spraying solvent into the atmosphere and require the use of covered gun cleaner.

1. If a gun cleaner is being used, connect and clean the gun in the gun cleaner according to the manufactures instructions.
2. If a gun cleaner is not being used:  
For pressure setups, remove air cap and clean separately using clean solvent.  
Connect a pressurized solvent supply to the fluid inlet, trigger the gun allowing solvent to flow thru the gun until clean.  
For siphon setups, first clean the siphon cup thoroughly then spray clean solvent thru the gun until clean.

**NOTE: Gun head disassembly is not recommended for normal cleaning and maintenance.**

*Gun head disassembly and reassembly instructions:*

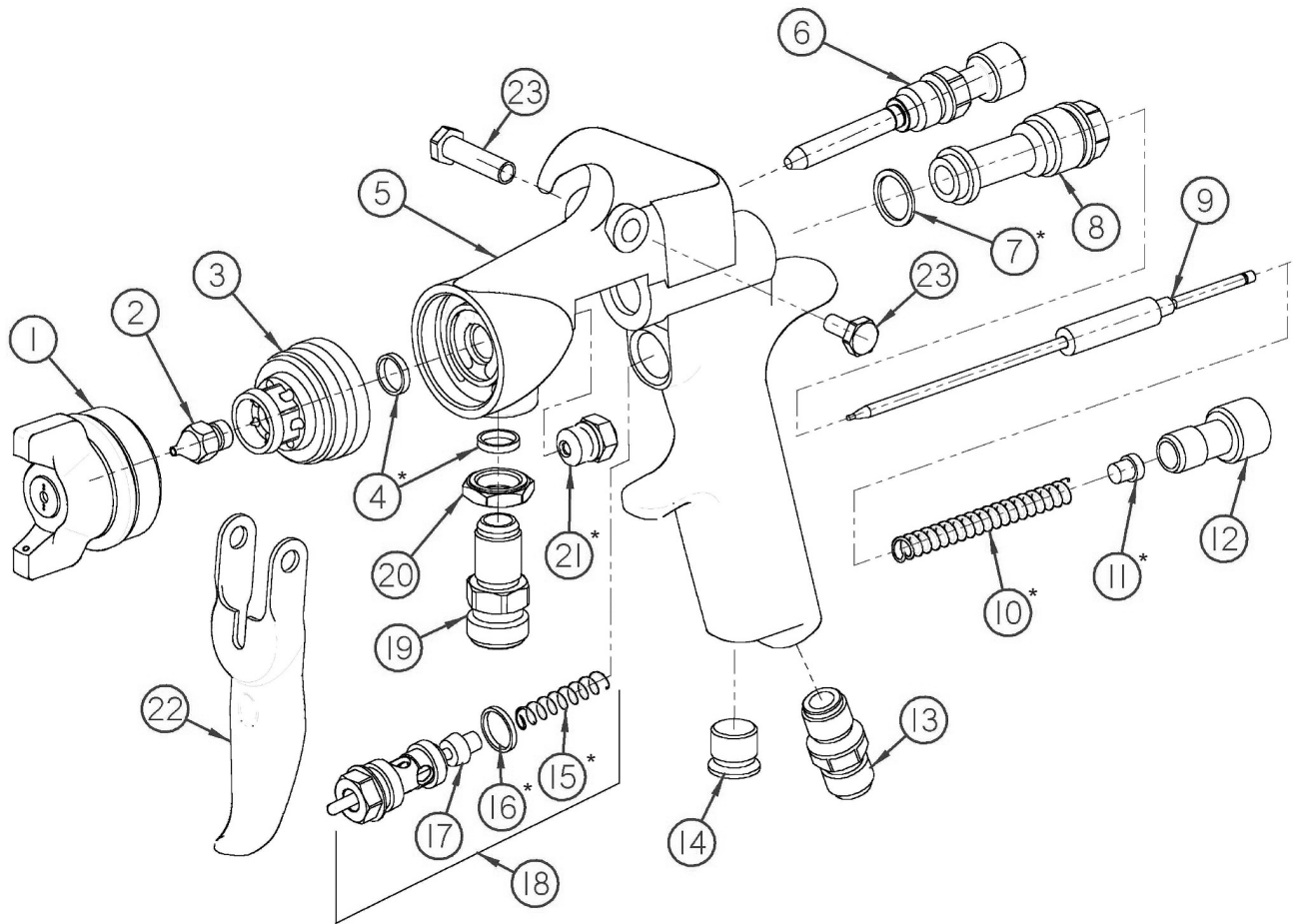
### Gun head disassembly

To remove the head insert (3):

1. Remove the air cap (1), fluid nozzle tip (2), head insert (3), and needle (9)
2. Remove the needle seal cartridge (21)
3. Loosen the locknut (20) and remove fluid inlet (19) using a 5/8” open-end wrench

### Gun head reassembly

1. Install the thread locknut (20) onto the fluid inlet (19) as far as possible.
2. Install the needle seal (21).
3. Install seal ring (4), then tighten the head insert (3) with 5/8” open-end wrench until snug. BEWARE - DO NOT OVER TIGHTEN.
4. Install seal ring (4), then tighten the fluid inlet (19) to approx. 25 ft.-lb. torque.
5. Tighten the locknut (20) to approx. 33 ft.-lb. torque.



ITEM NO.	PART NO.	DESCRIPTION	ITEM NO.	PART NO.	DESCRIPTION
1	See Air Cap Chart	Air Cap	13	60-104	Air Inlet
2	See Air Cap Chart	Fluid Nozzle Tip	14	60-122	Plug
3	60-15C	Head Insert	15	60-1003	Air Valve Spring
4	60-137	Seal Ring - Fluid	16	60-125	Gasket
5	60-1106	Gun Handle	17	60-302	Air Valve Poppet
6	See Air Cap Chart	Fan Control Assembly	18	60-1520	Air Valve Assembly
7	60-119	Seal	19	60-132	Fluid Inlet
8	60-0201	Rear Bushing	20	60-128	Locknut
9	See Air Cap Chart	Needle	21	61-1026	Needle Seal Cartridge
10	60-204	Needle Return Spring	22	60-2101	Trigger
11	60-205	Spring Seat	23	61-1033	Trigger Pivot Set
12	60-202	Fluid Control Knob	Repair Kit	10-112	Tomcat Repair Kit

\*Indicates part included in repair kit # 10-112

# FLUID NOZZLE / AIR CAP SELECTION CHARTS

## TOMCAT SERIES - Pressure / Siphon Feed Guns

### T100C CONVENTIONAL SPRAY GUN

MATERIAL TYPE	FLUID ORIFICE x AIR CAP	MAXIMUM PATTERN WIDTH	PRESS. / SIPHON
<b>Very Thin</b> less than 16 sec. Zahn #2 inks , dyes, solvents, stains	0.6, 0.7 mm x 2163	8	P
	0.6, 0.7 mm x 2166	9	S
	0.6, 0.7 mm x 2266	12	S
<b>Thin</b> 16 to 20 sec. Zahn #2 lacquers, enamels, primers, sealers	0.6, 0.7, 1.0 mm x 2163	8	P
	0.6, 0.7, 1.0 mm x 2366	14	S
	0.6, 0.7, 1.0 mm x 2466	13	S
<b>Medium</b> 21 to 30 sec. Zahn #2 automotive base coat enamels, primers epoxies, urethanes automotive clear coat	1.2, 1.3, 1.5, 1.8 mm x 2263	14	P
	1.2, 1.3, 1.5, 1.8 mm x 2266	10	S
	1.2, 1.3, 1.5, 1.8 mm x 2266-3	15	S
	1.2, 1.3, 1.5, 1.8 mm x 2466	13	S
<b>Heavy</b> over 30 sec. Zahn #2 heavy body primers high solid enamels high solid automotive coatings adhesives	1.5, 1.8mm x 2466	13	S
	2.2 mm x 2167	12	P
	2.2 mm x 2267	15	P
	2.8 mm x 2168	12	P